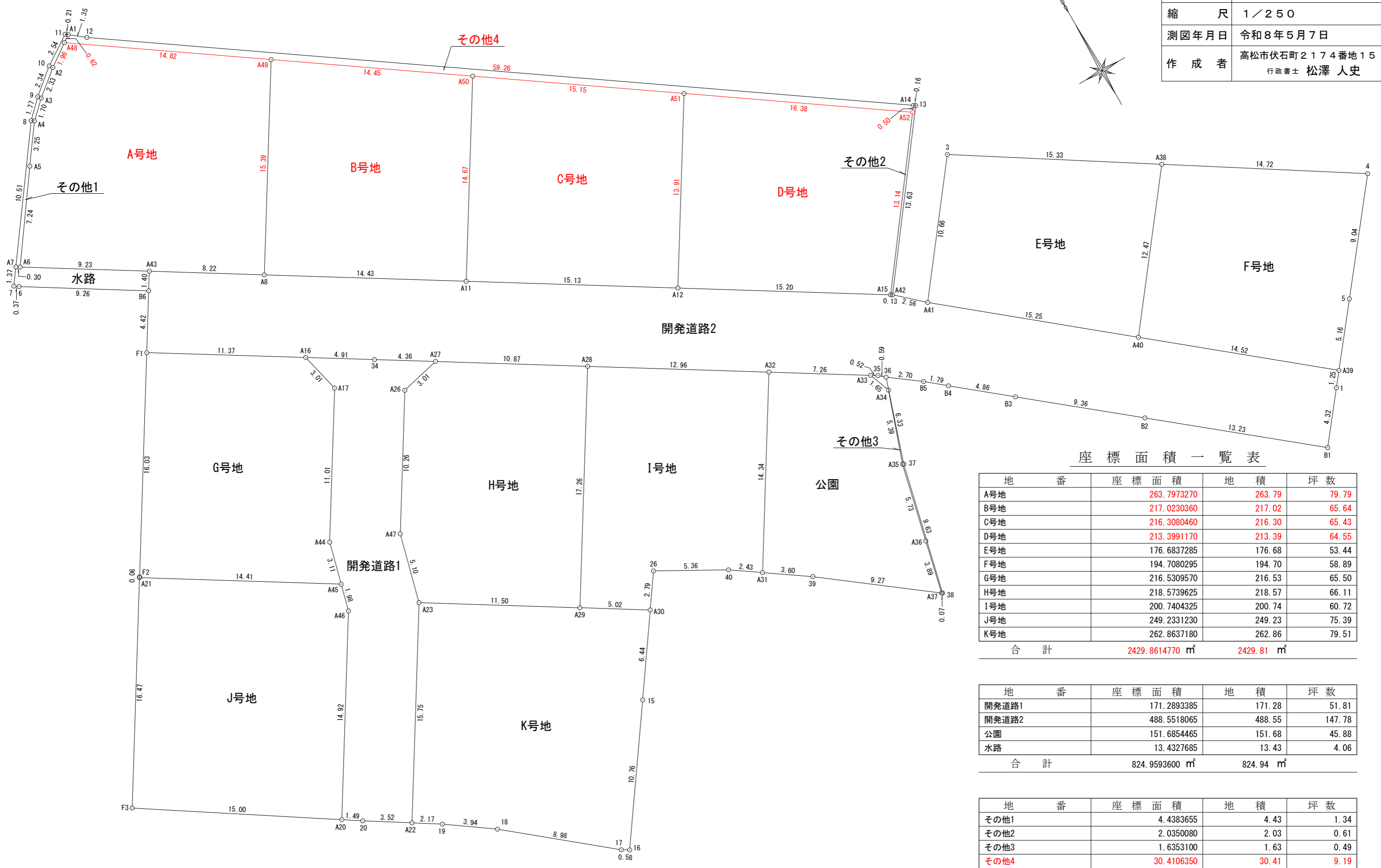


図面名	求積図
所在	高松市牟礼町原字下井手西
縮尺	1/250
測図年月日	令和8年5月7日
作成者	高松市伏石町2174番地15 行政書士 松澤 人史



座標面積一覧表

地番	座標面積	地積	坪数
A号地	263.7973270	263.79	79.79
B号地	217.0230360	217.02	65.64
C号地	216.3080460	216.30	65.43
D号地	213.3991170	213.39	64.55
E号地	176.6837285	176.68	53.44
F号地	194.7080295	194.70	58.89
G号地	216.5309570	216.53	65.50
H号地	218.5739625	218.57	66.11
I号地	200.7404325	200.74	60.72
J号地	249.2331230	249.23	75.39
K号地	262.8637180	262.86	79.51
合計	2429.8614770 m ²	2429.81 m ²	

地番	座標面積	地積	坪数
開発道路1	171.2893385	171.28	51.81
開発道路2	488.5518065	488.55	147.78
公園	151.6854465	151.68	45.88
水路	13.4327685	13.43	4.06
合計	824.9593600 m ²	824.94 m ²	

地番	座標面積	地積	坪数
その他1	4.4383655	4.43	1.34
その他2	2.0350080	2.03	0.61
その他3	1.6353100	1.63	0.49
その他4	30.4106350	30.41	9.19
合計	38.5193215 m ²	38.50 m ²	

合計面積 3293.25 m²

座標求積表

Table with columns: 地番, 測点, Xn, Yn, (Xn+1 - Xn-1) Yn. Rows include A48, A49, A8, A43, A6, A5, A4, A3, A2 and summary rows for area and number of plots.

座標求積表

Table with columns: 地番, 測点, Xn, Yn, (Xn+1 - Xn-1) Yn. Rows include A49, A50, A11, A8 and summary rows for area and number of plots.

座標求積表

Table with columns: 地番, 測点, Xn, Yn, (Xn+1 - Xn-1) Yn. Rows include A50, A51, A12, A11 and summary rows for area and number of plots.

座標求積表

Table with columns: 地番, 測点, Xn, Yn, (Xn+1 - Xn-1) Yn. Rows include A51, A52, A15, A12 and summary rows for area and number of plots.

座標求積表

Table with columns: 地番, 測点, Xn, Yn, (Xn+1 - Xn-1) Yn. Rows include 3, A38, A40, A41 and summary rows for area and number of plots.

座標求積表

Table with columns: 地番, 測点, Xn, Yn, (Xn+1 - Xn-1) Yn. Rows include A38, 4, 5, A39, A40 and summary rows for area and number of plots.

座標求積表

Table with columns: 地番, 測点, Xn, Yn, (Xn+1 - Xn-1) Yn. Rows include F1, A16, A17, A44, A45, A21, F2 and summary rows for area and number of plots.

座標求積表

Table with columns: 地番, 測点, Xn, Yn, (Xn+1 - Xn-1) Yn. Rows include A27, A28, A29, A23, A47, A26 and summary rows for area and number of plots.

座標求積表

Table with columns: 地番, 測点, Xn, Yn, (Xn+1 - Xn-1) Yn. Rows include A28, A32, A31, 40, 26, A30, A29 and summary rows for area and number of plots.

座標求積表

Table with columns: 地番, 測点, Xn, Yn, (Xn+1 - Xn-1) Yn. Rows include A21, A45, A46, A20, F3 and summary rows for area and number of plots.

座標求積表

Table with columns: 地番, 測点, Xn, Yn, (Xn+1 - Xn-1) Yn. Rows include A23, A29, A30, 15, 16, 17, 18, 19, A22 and summary rows for area and number of plots.

座標求積表

Table with columns: 地番, 測点, Xn, Yn, (Xn+1 - Xn-1) Yn. Rows include A32, A33, A34, A35, A36, A37, 39, A31 and summary rows for area and number of plots.

座標求積表

Table with columns: 地番, 測点, Xn, Yn, (Xn+1 - Xn-1) Yn. Rows include A1, A48, A2, A3, A4, A5, A6, A7, 8, 9, 10, 11 and summary rows for area and number of plots.

座標求積表

Table with columns: 地番, 測点, Xn, Yn, (Xn+1 - Xn-1) Yn. Rows include 13, A42, A15, A52, A14 and summary rows for area and number of plots.

座標求積表

Table with columns: 地番, 測点, Xn, Yn, (Xn+1 - Xn-1) Yn. Rows include A33, 35, 36, 37, 38, A37, A36, A35, A34 and summary rows for area and number of plots.

座標求積表

Table with columns: 地番, 測点, Xn, Yn, (Xn+1 - Xn-1) Yn. Rows include A1, 12, A14, A52, A51, A50, A49, A48 and summary rows for area and number of plots.

座標求積表

Table with columns: 地番, 測点, Xn, Yn, (Xn+1 - Xn-1) Yn. Rows include A16, 34, A27, A26, A47, A23, A22, 20, A20, A46, A45, A44, A17 and summary rows for area and number of plots.

座標求積表

Table with columns: 地番, 測点, Xn, Yn, (Xn+1 - Xn-1) Yn. Rows include A43, A8, A11, A12, A15, A42, A41, A40, A39, 1, B1, B2, B3, B4, B5, 36, 35, A33, A32, A28, A27, 34, A16, F1, B6 and summary rows for area and number of plots.

座標求積表

Table with columns: 地番, 測点, Xn, Yn, (Xn+1 - Xn-1) Yn. Rows include A7, A6, A43, B6, 6, 7 and summary rows for area and number of plots.

座標求積表

Table with columns: 地番, 測点, Xn, Yn, (Xn+1 - Xn-1) Yn. Rows include A7, A6, A43, B6, 6, 7 and summary rows for area and number of plots.

座標求積表

Table with columns: 地番, 測点, Xn, Yn, (Xn+1 - Xn-1) Yn. Rows include A7, A6, A43, B6, 6, 7 and summary rows for area and number of plots.

Table with columns: 図面名, 所在, 測図年月日, 作成者. Content: 求積表, 高松市牟礼町原字下井手西, 令和8年5月7日, 高松市伏石町2174番地15 行政書士 松澤 人史